



Options available

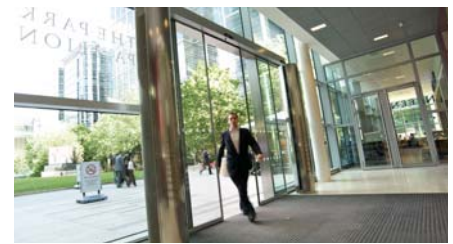
The Rund air curtain is a popular choice with architects. It has an extremely attractive cylindrical design, which can be fitted in many different mounting or suspension options to compliment an entrance's structural design.

Low noise centrifugal double inlet fans are driven by an external motor rotor with a built in thermal protection contact. The perforated inlet grilles have filter functions that are easy to maintain. The anodised aluminium lamellas are aerofoil shaped and are adjustable from 0 to 15° on either side.

The Rund can be mounted end-to-end, so they can accommodate very wide entrances such as shopping centres, airports or sports arenas.

A standard manual controller, 7 metres of control cable and an IR handheld remote are included. Other control options available include the Clever controller or the BMS interface.

<p>COLOURS AVAILABLE</p> <p>White RAL9016 (standard) Silver RAL9006 (standard) Any RAL colour Brushed stainless steel</p>	<p>MOUNTING OPTIONS</p> <p>Horizontal Vertical</p>	<p>MAX DOOR HEIGHT</p> <p>Horizontal 4.2m Vertical 8.4m (2x4.2m)</p>	<p>FAN OPTIONS</p> <p>AC fan (standard) EC fan (option)</p>	<p>HEATING OPTIONS</p> <p>Electric LPHW Heat pump Air only</p>	<p>LENGTHS AVAILABLE</p> <p>1.0m 2.5m 1.5m 3.0m 2.0m</p>
--	---	---	--	---	---



Air only

Model	Max mounting height m	Airflow m³/h	Power/current fans 230V-50Hz kW/A	Noise level (@5m) dB(A)	Weight kg
RUND M 1000 A	3.5	1980	0.318 / 1.41	55	42
RUND M 1500 A	3.5	2640	0.424 / 1.88	56	63
RUND M 2000 A	3.5	3960	0.636 / 2.82	57	79
RUND M 2500 A	3.5	4620	0.742 / 3.29	58	88
RUND M 3000 A	3.5	5280	0.848 / 3.76	59	99
RUND G 1000 A	3.8	2400	0.642 / 2.85	57	46
RUND G 1500 A	3.8	3200	0.856 / 3.80	58	68
RUND G 2000 A	3.8	4800	1.284 / 5.70	59	89
RUND G 2500 A	3.8	5600	1.498 / 6.65	60	98
RUND G 3000 A	3.8	6400	1.712 / 7.60	61	108
RUND ECG 1000 A	4.2	2700	0.225 / 1.95	61	46
RUND ECG 1500 A	4.2	3600	0.300 / 2.60	62	68
RUND ECG 2000 A	4.2	5400	0.450 / 3.90	63	89
RUND ECG 2500 A	4.2	6300	0.525 / 4.55	64	98
RUND ECG 3000 A	4.2	7200	0.600 / 5.20	65	108

Electrically heated

Model	Max mounting height m	Airflow m³/h	Electrical heating capacity 400Vx3-50Hz kW	Power/current fans 230V-50Hz kW/A	Noise level (@5m) dB(A)	Weight kg
RUND M 1000 E	3.5	1980	3/6/9	0.318 / 1.41	55	49
RUND M 1500 E	3.5	2640	4/8/12	0.424 / 1.88	56	75
RUND M 2000 E	3.5	3960	6/12/18	0.636 / 2.82	57	97
RUND M 2500 E	3.5	4620	6/12/18	0.742 / 3.29	58	108
RUND M 3000 E	3.5	5280	8/16/24	0.848 / 3.76	59	119
RUND G 1000 E	3.8	2400	5/10/15	0.642 / 2.85	57	54
RUND G 1500 E	3.8	3200	7.5/15/22.5	0.856 / 3.80	58	81
RUND G 2000 E	3.8	4800	10/20/30	1.284 / 5.70	59	107
RUND G 2500 E	3.8	5600	10/20/30	1.498 / 6.65	60	118
RUND G 3000 E	3.8	6400	10/20/30	1.712 / 7.60	61	128
RUND ECG 1000 E	4.2	2700	5/10/15	0.225 / 1.95	61	54
RUND ECG 1500 E	4.2	3600	7.5/15/22.5	0.300 / 2.60	62	81
RUND ECG 2000 E	4.2	5400	10/20/30	0.450 / 3.90	63	107
RUND ECG 2500 E	4.2	6300	10/20/30	0.525 / 4.55	64	118
RUND ECG 3000 E	4.2	7200	10/20/30	0.600 / 5.20	65	128

Water heated

Model	Max mounting height m	Airflow m³/h	P86		P64		P54		Power/current fans 230V-50Hz kW/A	Noise level (@5m) dB(A)	Weight kg
			Water heating capacity 80/60°C kW	Water drop pressure 80/60°C Pa	Water heating capacity 60/40°C kW	Water drop pressure 60/40°C Pa	Water heating capacity 50/40°C kW	Water drop pressure 50/40°C Pa			
RUND M 1000 P	3.5	1860	9.84	1000	9.22	4990	-	-	0.318 / 1.41	55	47
RUND M 1500 P	3.5	2480	14.23	760	13.65	6430	-	-	0.424 / 1.88	56	71
RUND M 2000 P	3.5	3720	22.17	2190	19.70	5470	-	-	0.636 / 2.82	57	90
RUND M 2500 P	3.5	4340	27.69	4000	23.48	4060	-	-	0.742 / 3.29	58	101
RUND M 3000 P	3.5	4960	33.15	6560	28.29	6730	-	-	0.848 / 3.76	59	112
RUND G 1000 P	3.8	2250	11.04	1230	10.42	6190	10.56	1790	0.642 / 2.85	57	52
RUND G 1500 P	3.8	3000	16.02	940	15.47	8020	16.37	5670	0.856 / 3.80	58	77
RUND G 2000 P	3.8	4500	24.92	2700	22.29	6810	23.15	3030	1.284 / 5.70	59	100
RUND G 2500 P	3.8	5250	31.16	4930	26.61	5060	28.76	5450	1.498 / 6.65	60	109
RUND G 3000 P	3.8	6000	37.35	8110	32.10	8410	34.03	7180	1.712 / 7.60	61	119
RUND ECG 1000 P	4.2	2550	11.89	1400	11.27	7110	11.50	2090	0.225 / 1.95	61	52
RUND ECG 1500 P	4.2	3400	17.29	1070	16.77	9240	17.86	6620	0.300 / 2.60	62	77
RUND ECG 2000 P	4.2	5100	26.86	3080	24.14	7850	25.24	3530	0.450 / 3.90	63	100
RUND ECG 2500 P	4.2	5950	33.63	5650	28.84	5840	31.38	6360	0.525 / 4.55	64	109
RUND ECG 3000 P	4.2	6800	40.34	9290	34.81	9710	37.16	8400	0.600 / 5.20	65	119

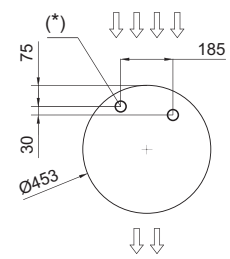
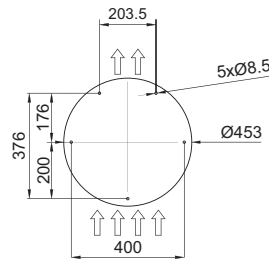
P86 - 2 rows coil, 2 x ¾" female connector. P64 - 3 rows coil, 2 x ¾" female connector. P54 - 4 rows coil, 2 x 1" male connector.

Layouts and dimensions

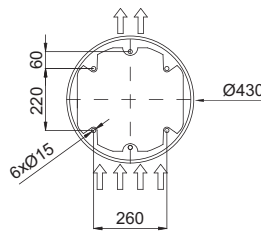
Vertical installation



Floor fixing points without foot



Floor fixing points with foot



	L
RUND 1000	1025
RUND 1500	1525
RUND 2000	2030
RUND 2500	2530
RUND 3000	2980

Horizontal installation



Ceiling mounted with threaded rods



Wall mounted with lateral arms



Wall/ceiling mounted with angle supports



Wall/ceiling mounted through arms



Floor mounted (goalpost)